



CONTROL SYSTEM

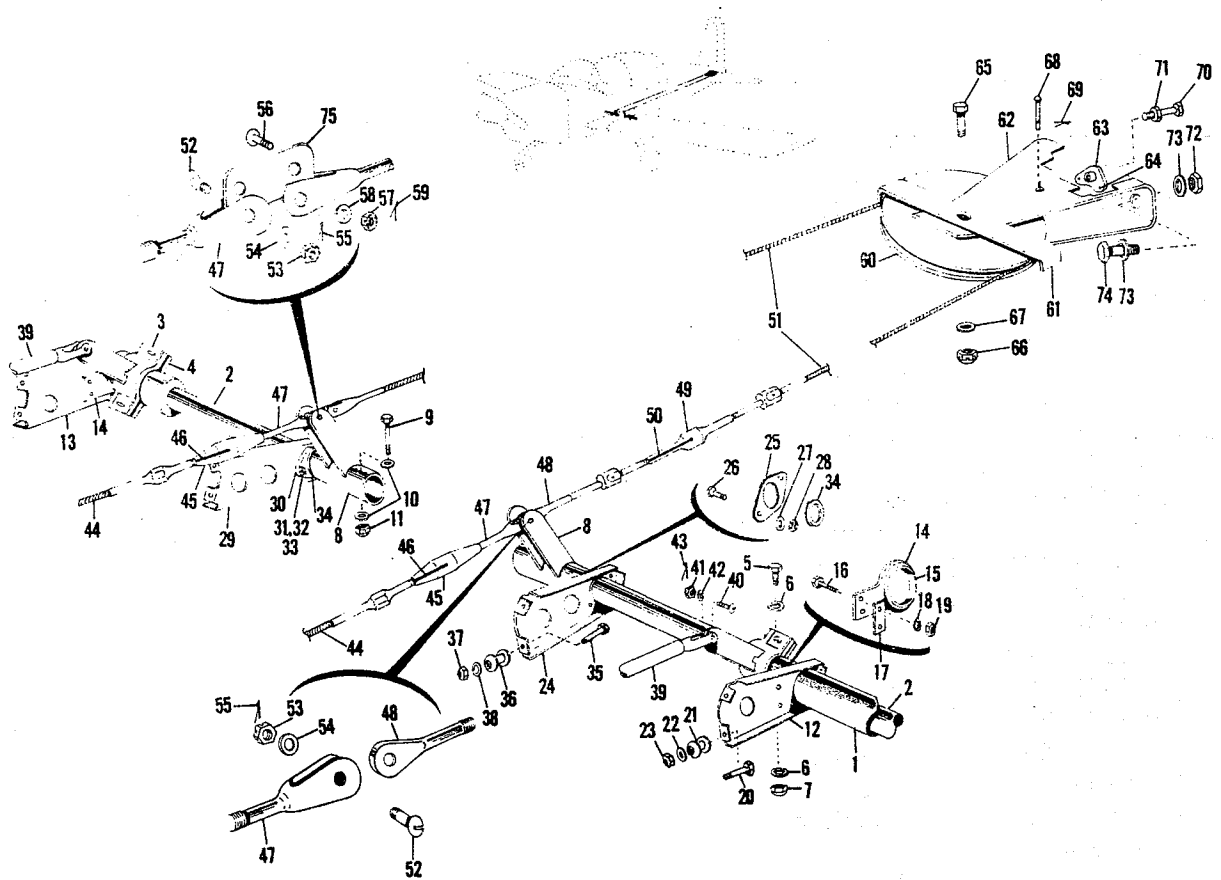


FIGURE 17. CONTROL SYSTEM INSTALLATION



FIGURE AND INDEX NO.	PART NUMBER	DESCRIPTION	UNITS PER ASSY	USABLE ON CODE
			1 2 3 4 5 6 7	
17-		CONTROL SYSTEM INSTL		
-1	604055-501	Tube Assy - - - - -	2	
-2	202032-501	Aileron Assy - - - - -	2	
-3	604054-501	Horn Assy Upper - - - - -	2	
-4	604054-1	Shell - - - - -	2	
-5	AN3-5A	Bolt - - - - -	4	
-6	MS20365-1032	Nut - - - - -	4	
-7	AN960-10	Washer - - - - -	8	
-8	603076-501	Horn Assy - - - - -	2	
-9	AN174-15A	Bolt - - - - -	2	
-10	MS20364-428	Nut - - - - -	2	
-11	AN960-416	Washer - - - - -	4	
-12	602075-3	Support - - - - -	1	
-13	602075-4	Support - - - - -	1	
-14	604067-501	Support Assy - - - - -	2	
-15	902013-3	Bearing - - - - -	2	
-16	AN4-5A	Bolt - - - - -	4	
-17	604058-1	Shim - - - - -	2	
-18	AN960-416	Washer - - - - -	4	
-19	MS20364-428	Nut - - - - -	4	
-20	AN3-10A	Bolt - - - - -	4	
-21	AES201-1	Spacer - - - - -	4	
-22	AN970-3	Washer - - - - -	4	
-23	MS20365-1032	Nut - - - - -	4	
	603075-501	Support Assy - - - - -	1	
-24	603075-1	Support - - - - -	1	
-25	603077-501	Flange Assy - - - - -	1	
-26	AN3-4A	Bolt - - - - -	2	
-27	AN960-10L	Washer - - - - -	2	
-28	MS20364-1032	Nut - - - - -	2	
	603075-502	Support Assy - - - - -	1	
-29	603075-2	Support - - - - -	1	
-30	603077-501	Flange Assy - - - - -	1	
-31	AN3-4A	Bolt - - - - -	2	
-32	AN960-10L	Washer - - - - -	2	
-33	MS20364-1032	Nut - - - - -	2	
-34	902013-1	Bearing - - - - -	2	
-35	AN3-10A	Bolt - - - - -	4	
-36	AES201-1	Spacer - - - - -	4	
-37	MS20365-1032	Nut - - - - -	4	
-38	AN960-10	Washer - - - - -	4	
-39	604053-501	Flap Assy - - - - -	1	
-40	AN23-10	Bolt - - - - -	2	
-41	AN320-3	Nut - - - - -	2	
-42	AN960-10	Washer - - - - -	2	

(Continued on next page)



FIGURE AND INDEX NO.	PART NUMBER	DESCRIPTION							UNITS PER ASSY	USABLE ON CODE	
		1	2	3	4	5	6	7			
17-											
-43	MS24665-132	Cotter Pin	-	-	-	-	-	-	-	2	
-44	602107-507	Cable Assy	-	-	-	-	-	-	-	2	
-45	MS21251B5S	Turnbuckle Body	-	-	-	-	-	-	-	2	
-46	MS21256-1	Locking Clip	-	-	-	-	-	-	-	2	
-47	MS21252-5LS	Clevis	-	-	-	-	-	-	-	2	
-48	MS21254-5RL	Eye End	-	-	-	-	-	-	-	1	
-49	MS21251B5L	Turnbuckle Body	-	-	-	-	-	-	-	1	
-50	MS21256-2	Locking Clip	-	-	-	-	-	-	-	2	
-51	602107-508	Cable Assy	-	-	-	-	-	-	-	1	
-52	AN24-15	Bolt	-	-	-	-	-	-	-	2	
-53	AN320-4	Nut	-	-	-	-	-	-	-	2	
-54	AN960-416	Washer	-	-	-	-	-	-	-	2	
-55	MS24665-132	Cotter Pin	-	-	-	-	-	-	-	2	
-56	AN23-11	Bolt	-	-	-	-	-	-	-	1	
-57	AN320-3	Nut	-	-	-	-	-	-	-	1	
-58	AN960-10	Washer	-	-	-	-	-	-	-	1	
-59	MS24665-132	Cotter Pin	-	-	-	-	-	-	-	1	
-60	MS20220-3	Pulley	-	-	-	-	-	-	-	1	
-61	603071-1	Guard	-	-	-	-	-	-	-	1	
	603072-501	Bracket Assy	-	-	-	-	-	-	-	1	
-62	603072-1	Bracket	-	-	-	-	-	-	-	1	
-63	NAS1027N4	Nut Plate	-	-	-	-	-	-	-	1	
-64	1204-0306	Rivet (Chobert)	-	-	-	-	-	-	-	2	
-65	AN5-12A	Bolt	-	-	-	-	-	-	-	1	
-66	MS20364-524	Nut	-	-	-	-	-	-	-	1	
-67	AN960-516	Washer	-	-	-	-	-	-	-	1	
-68	MS20392-1C53	Clevis Pin	-	-	-	-	-	-	-	1	
-69	MS24665-132	Cotter Pin	-	-	-	-	-	-	-	1	
-70	NAS428-4-13	Bolt-Adjusting	-	-	-	-	-	-	-	1	
-71	AN316-4R	Nut	-	-	-	-	-	-	-	1	
-72	AN6-7A	Bolt	-	-	-	-	-	-	-	2	
-73	AN960-616	Washer	-	-	-	-	-	-	-	4	
-74	MS20365-624	Nut	-	-	-	-	-	-	-	2	
-75	603073-1	Link	-	-	-	-	-	-	-	1	