



BRAKE SYSTEM

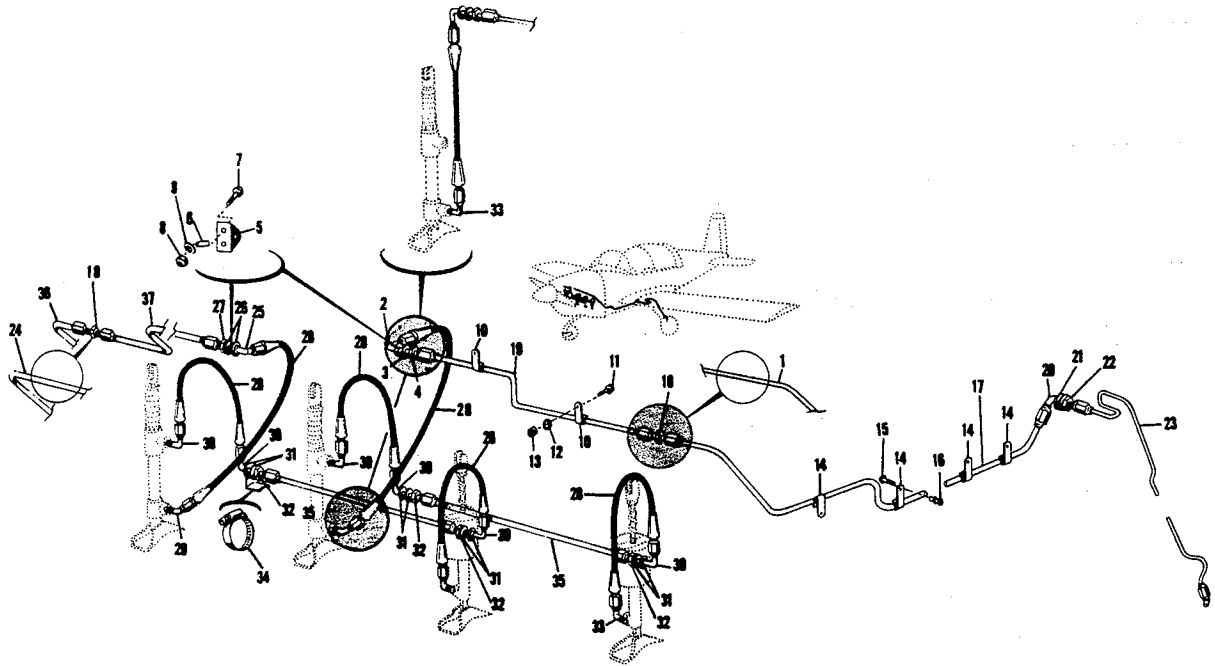


FIGURE 32: BRAKE SYSTEM INSTALLATION



FIGURE AND INDEX NO.	PART NUMBER	DESCRIPTION	UNITS PER ASSY	USABLE ON CODE		
					1	2
32		BRAKE SYSTEM INSTALLATION	NP			
	403009	Brake System Installation - - - - -	NP			
	403009-502	Dual Brake Instl. (Optional)- - - - -	NP			
-1	403009-507	Tube Assy.- - - - -	1	A		
-2	AN833-4D	Elbow 90° Bulkhead- - - - -	1			
-3	AN960-716	Washer- - - - -	2			
-4	AN924-4D	Nut - - - - -	1			
-5	403009-8	Bracket - - - - -	1			
-6	902015-2	Bushing - - - - -	2			
-7	AN3-10A	Bolt- - - - -	2			
-8	AN364-1032	Nut - - - - -	2			
-9	AN960-10	Washer- - - - -	2			
-10	MS21104D4	Clamp - - - - -	2			
-11	AN3-10A	Bolt- - - - -	2			
-12	AN960-10	Washer - - - - -	2			
-13	20364-1032	Nut - - - - -	2			
-14	MS21104D4	Clamp - - - - -	8			
-15	AN526-832R8	Screw - - - - -	8			
-16	A8-75	Rivnut- - - - -	8			
-17	10073-502	Tube Assy.- - - - -	1			
-18	AN815-4D	Union - - - - -	2			
-19	10073-503	Tube Assy.- - - - -	1			
-20	AN833-4D	Elbow 90° Bulkhead- - - - -	1			
-21	AN960-716	Washer- - - - -	2			
-22	AN924-4D	Nut - - - - -	1			
-23	403009-509	Tube Assy. (LH) - - - - -	1			
	403009-508	Tube Assy. (RH) - - - - -	1			
-24	403009-506	Tube Assy.- - - - -	1	A		
-25	AN833-4D	Elbow 90° Bulkhead- - - - -	1			
-26	AN960-716	Washer- - - - -	2			
-27	AN924-4D	Nut - - - - -	1			
-28	MS28741-4-0110	Hose Assy.- - - - -	6			
-29	AN832-4D	Elbow 45° - - - - -	2			
-30	AN833-4	Elbow 90° Bulkhead- - - - -	4			
-31	AN960-716	Washer- - - - -	8			
-32	AN924-4D	Nut - - - - -	4			
-33	AN822-4D	Elbow 90° - - - - -	4			
-34	QS100M16S	Ring Clamp- - - - -	4			
-35	403009-503	Tube Assy - Fwd. - - - - -	1			
	403009-503	Tube Assy - Aft. - - - - -	1			
-36	10073-504	Tube Assy- - - - -	1			
-37	10073-501	Tube Assy- - - - -	1			

(A - - AA-1 Serial 0102 and up)



PARKING BRAKE

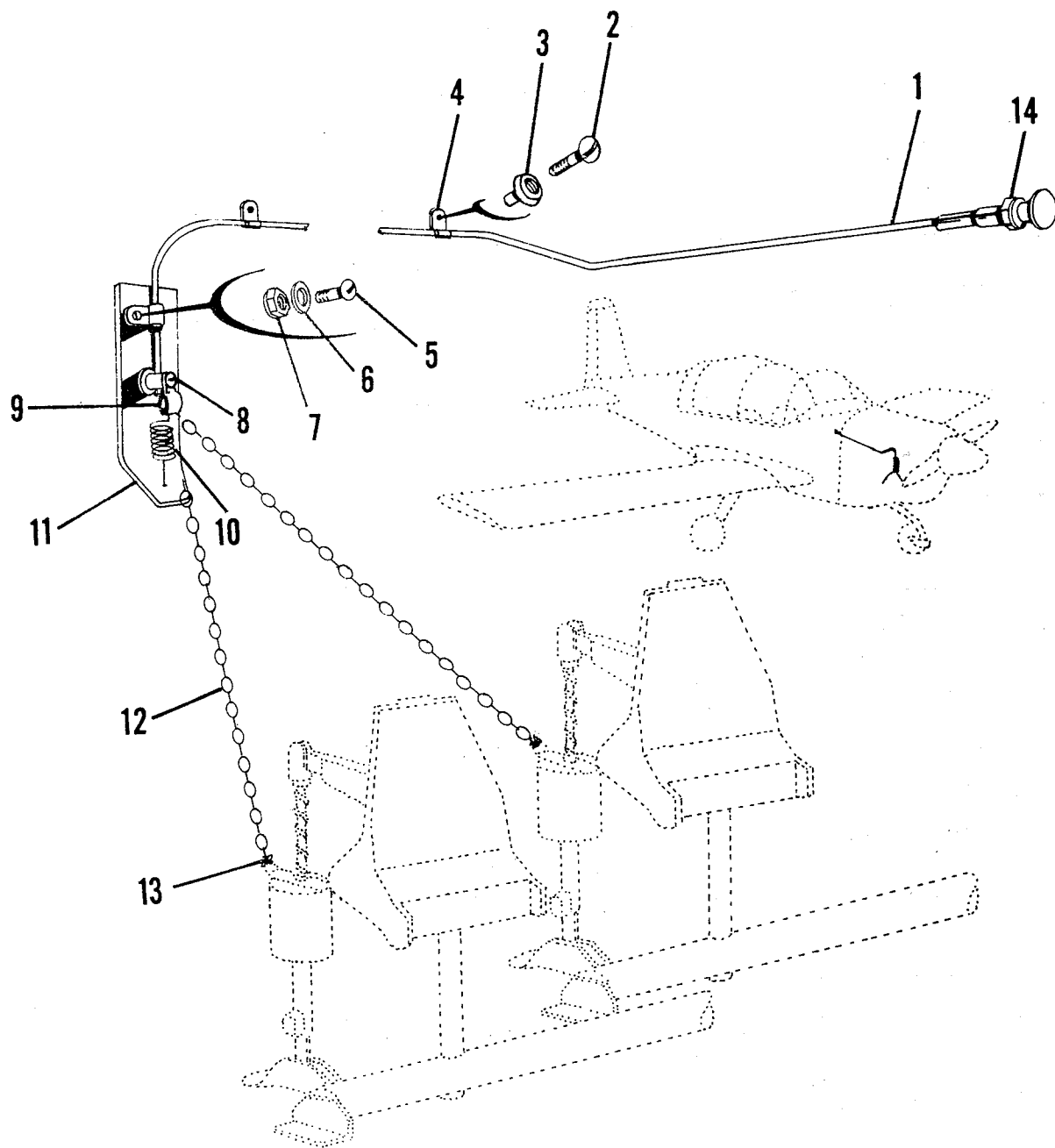


FIGURE 33. PARKING BRAKE INSTALLATION



FIGURE AND INDEX NO.	PART NUMBER	DESCRIPTION	UNITS PER ASSY	USABLE ON CODE		
					1	2
33-		PARKING BRAKE INSTALLATION				
-1	64-032-736	Control - - - - -	1			
-2	AN526-832R6	Screw - - - - -	2			
-3	A8-75	Rivnut - - - - -	2			
-4	MS-21919DG3	Clamp - - - - -	3			
-5	AN526-1032R16	Screw - - - - -	2			
-6	AN970-3	Washer - - - - -	2			
-7	MS20364-1032	Nut - - - - -	2			
-8	FT-191	Wire Stop - - - - -	1			
-9	MS21919DG3	Clamp - - - - -	1			
-10	LE-0266-5	Spring - - - - -	1			
-11	403013-1	Bracket - - - - -	1			
-12	36T0521	Chain - - - - -	1			
-13	MS24995C41	Safety Wire - - - - -	A.R.			
-14	AN316-6	Bolt- - - - -	1			



MASTER CYLINDER

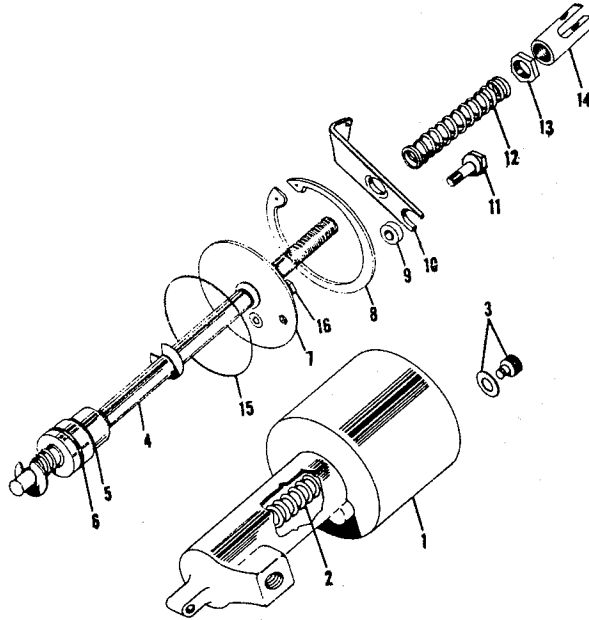


FIGURE 34A MASTER CYLINDER ASSEMBLY

FIGURE AND INDEX NO.	PART NUMBER	DESCRIPTION	1 2 3 4 5 6 7							UNITS PER ASSY	USABLE ON CODE		
34A-	403010-3	MASTER CYLINDER ASSEMBLY									2		
-1	A-061-A	Brake Housing (Gerdes)	-	-	-	-	-	-	-	-	-	1	
-2	A-089-A	Spring	-	-	-	-	-	-	-	-	-	1	
-3	A-087-A	Screw and Washer Ass'y	-	-	-	-	-	-	-	-	-	1	
-4	A-468-A	Shaft and Thrust Collar Ass'y	-	-	-	-	-	-	-	-	-	1	
		Shaft-	-	-	-	-	-	-	-	-	-	NP	
		Thrust Collar	-	-	-	-	-	-	-	-	-	NP	
	A-113-A	Spring	-	-	-	-	-	-	-	-	-	1	
	X5133-21	Snap Ring	-	-	-	-	-	-	-	-	-	2	
	A-223-A	Piston	-	-	-	-	-	-	-	-	-	1	
		- - - * - - -											
-5	AN6227-4	"O" Ring	-	-	-	-	-	-	-	-	-	1	
-6	AN6227-9	"O" Ring	-	-	-	-	-	-	-	-	-	1	
-7	A-331-A	Cover Plate Ass'y	-	-	-	-	-	-	-	-	-	1	
		Bronze Bushing	-	-	-	-	-	-	-	-	-	NP	
		- - - * - - -											
-8	N5000-175	Snap Ring (Tru-Arc)	-	-	-	-	-	-	-	-	-	1	
-9	A-126-A	Spacer	-	-	-	-	-	-	-	-	-	1	
-10	A-147-A	Parking Brake Lever	-	-	-	-	-	-	-	-	-	1	
-11	AN3-5A	Bolt	-	-	-	-	-	-	-	-	-	1	
-12	A-088-A	Spring	-	-	-	-	-	-	-	-	-	1	
-13	AN316-4	Lock Nut	-	-	-	-	-	-	-	-	-	1	
-14	A-279-A	Clevis	-	-	-	-	-	-	-	-	-	1	
-15	TS33-30	Sq. Cut Rubber Seal	-	-	-	-	-	-	-	-	-	1	
-16	A-148-A	Filler Plug	-	-	-	-	-	-	-	-	-	1	
		- - - * - - -											



MASTER CYLINDER

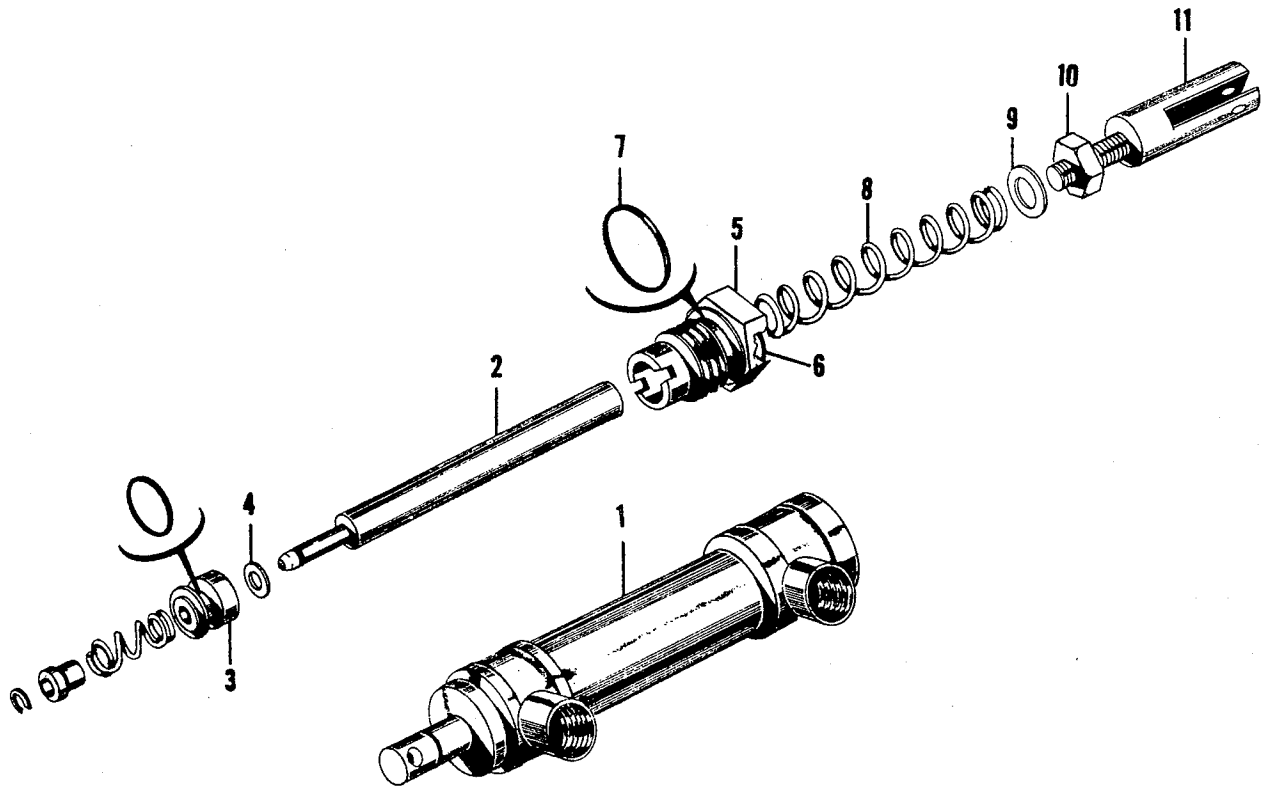


FIGURE 34B MASTER CYLINDER ASSEMBLY

FIGURE AND INDEX NO.	PART NUMBER								UNITS PER ASSY	USABLE ON CODE
		1	2	3	4	5	6	7		
34B		MASTER CYLINDER ASSY (Cleveland Aircraft Product)								
	403014-501	Master Cylinder Assy - - - - -							1	
-1	189-00502	Hydraulic Cylinder Assy- - - - -							1	
-2	182-00302	Piston Rod Assy- - - - -							1	
	142-02800	Piston Rod - - - - -							1	
	155-00500	Ring Snap- - - - -							1	
	145-01500	Bushing- - - - -							1	
	082-00800	Spring - - - - -							1	
		- - - * - - -								
-3	092-01500	Piston Assembly- - - - -							1	
	101-00800	"O" Ring - - - - -							1	
		- - - * - - -								
-4	095-01100	Washer Seal- - - - -							1	
-5	141-00500	Gland Packing- - - - -							1	
-6	101-00700	"O" Ring - - - - -							1	
-7	101-01100	"O" Ring - - - - -							1	
-8	082-00900	Spring - - - - -							1	
-9	095-10200	Washer - - - - -							1	
-10	094-03000	Nut-Jam- - - - -							1	
-11	403016-1	Fork End - - - - -							1	